

design options



Livingston 23

Standard Floorplan

4 2 2 2 2

22.65squares | 210.41m²

Block Size:

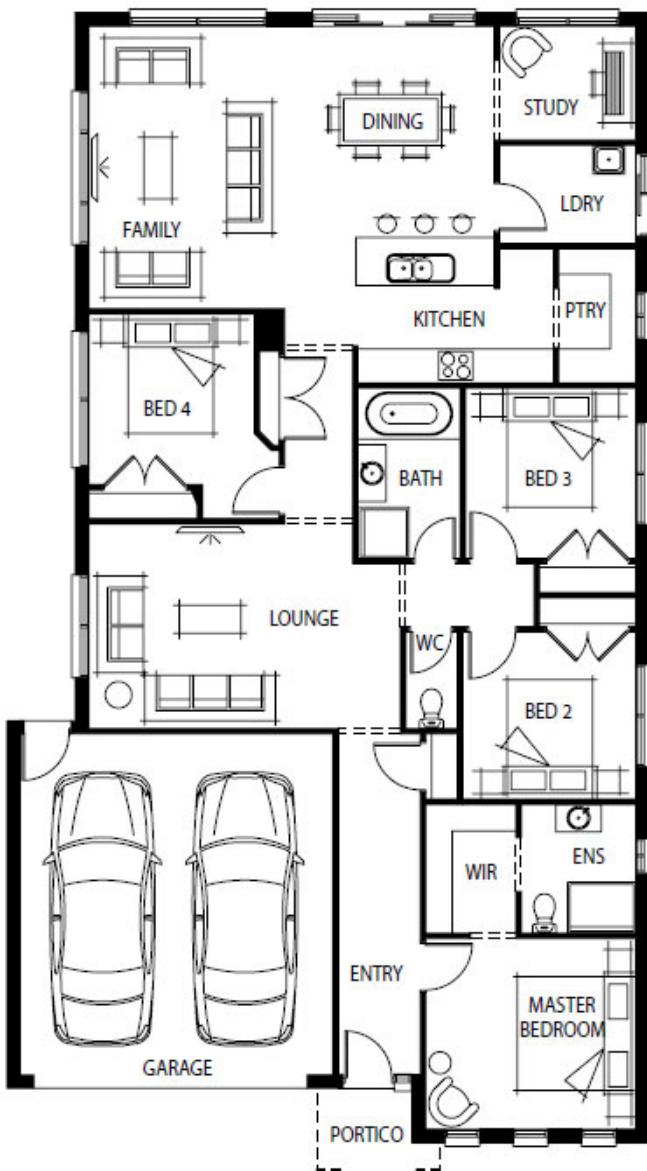
12.5m+ width

28.0m+ depth

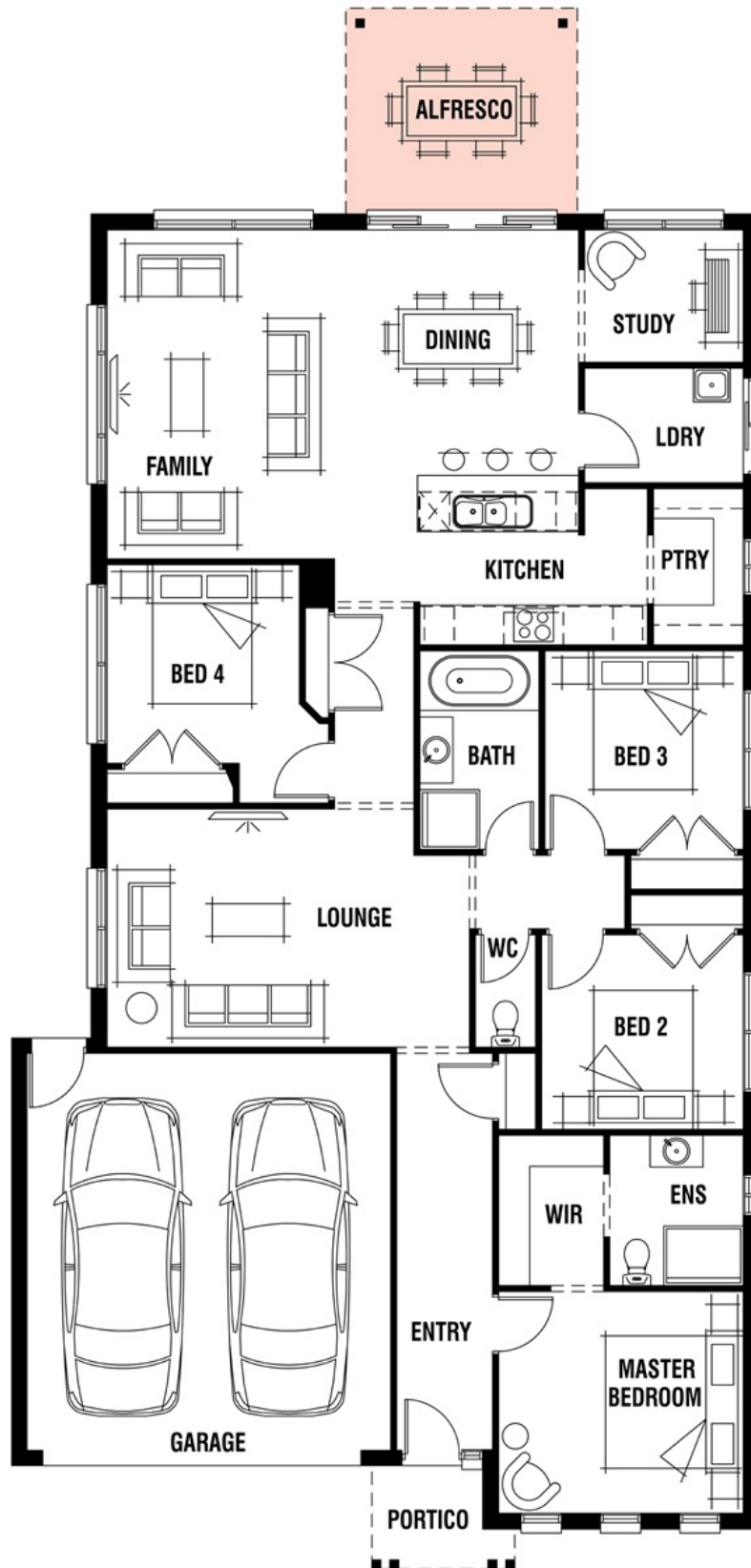
House (width x length): 11.30m x 20.65m

Master Bedroom	3.7 x 3.4m
Bedroom 2	3.1 x 2.9m
Bedroom 3	3.0 x 3.0m
Bedroom 4	2.9 x 3.3m
Study	2.4 x 2.0m
Lounge	3.4 x 3.6m
Family	3.4 x 5.0m
Dining	3.7 x 3.7m

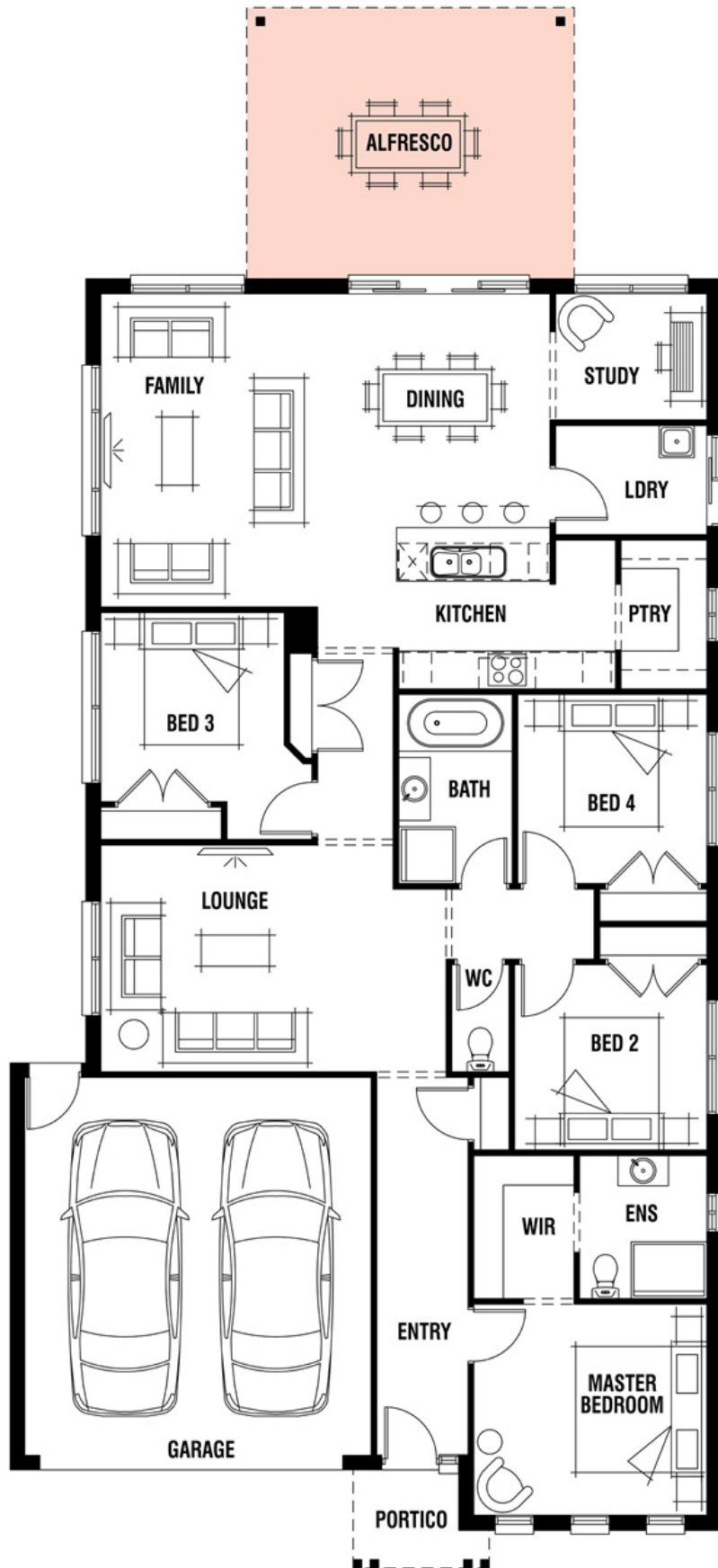
Living Area	166.78m ²	17.95sq
Garage	35.97m ²	3.87sq
Portico	7.66m ²	0.82sq*



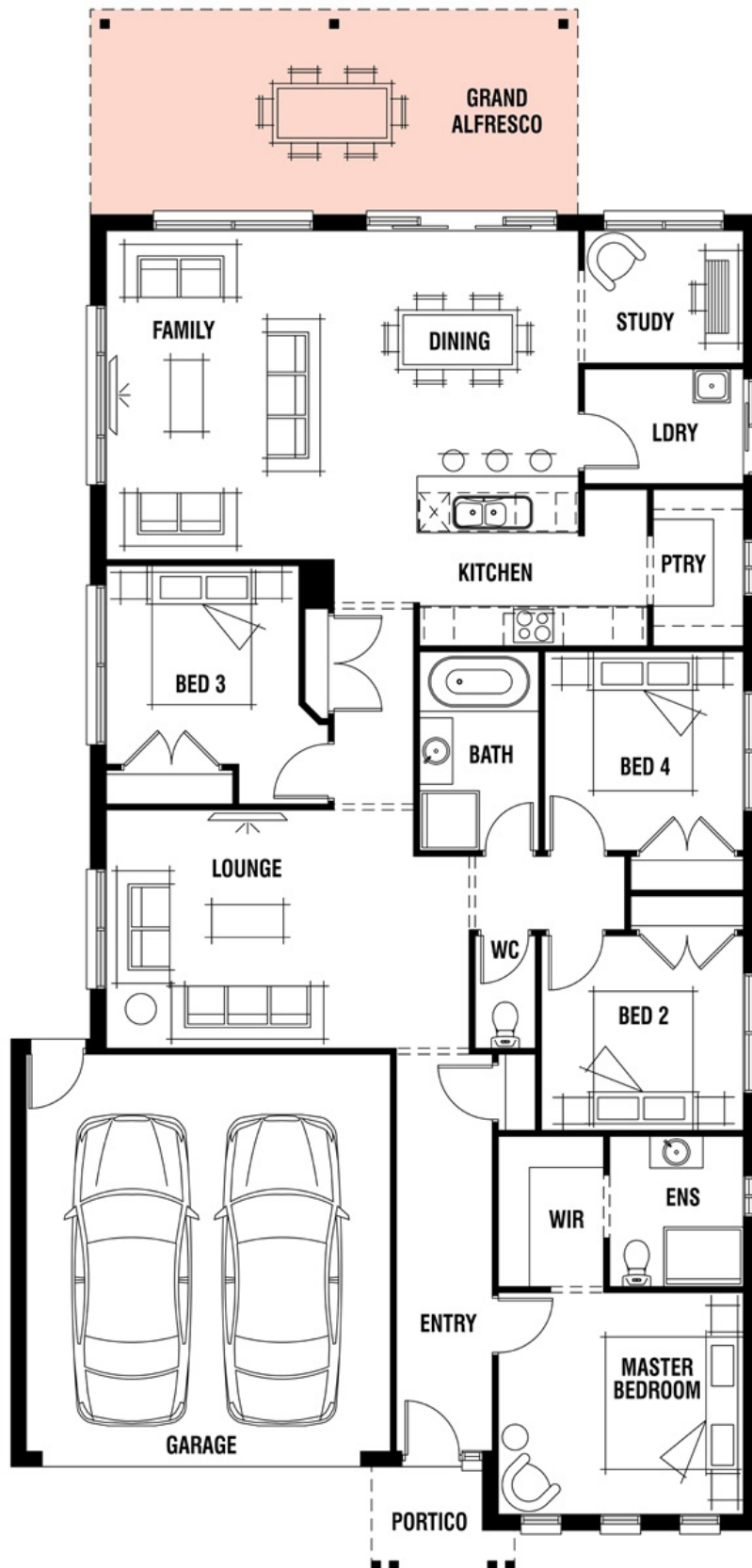
aspire
Designer Homes



Minimum lot widths and depth may vary due to Council requirements and estate guidelines. Geographical zones apply. Sizes based on standard facade. Sizes may vary slightly subject to facades selected. Brochure is for illustration purposes and should be used as a guide only. Illustrations are not to scale. Garage dimensions are external measurements only. Refer to actual working drawings. Façade photos may contain upgrades.



Minimum lot widths and depth may vary due to Council requirements and estate guidelines. Geographical zones apply. Sizes based on standard facade. Sizes may vary slightly subject to facades selected. Brochure is for illustration purposes and should be used as a guide only. Illustrations are not to scale. Garage dimensions are external measurements only. Refer to actual working drawings. Façade photos may contain upgrades.



Minimum lot widths and depth may vary due to Council requirements and estate guidelines. Geographical zones apply. Sizes based on standard facade. Sizes may vary slightly subject to facades selected. Brochure is for illustration purposes and should be used as a guide only. Illustrations are not to scale. Garage dimensions are external measurements only. Refer to actual working drawings. Façade photos may contain upgrades.