

design options



Parkville

23

Standard Floorplan

 3
  2
  2
  2

23.30squares | 216.38m²

Block Size:

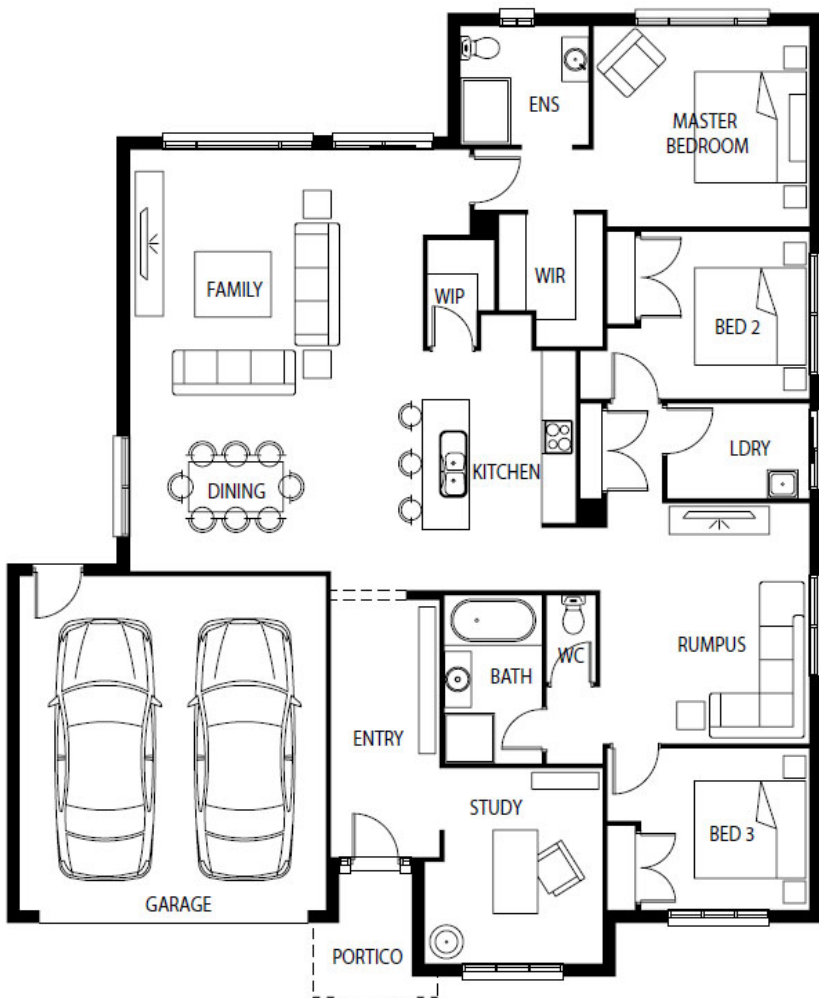
16.0m+ width

25.0m+ depth

House (width x length): 14.65m x 17.79m

Master Bedroom	3.6 x 3.9m
Bedroom 2	3.0 x 3.0m
Bedroom 3	2.9 x 3.0m
Study	3.5 x 3.2m
Family	4.5 x 5.3m
Dining	3.1 x 3.6m
Rumpus	4.3 x 3.7m

Living Area	172.77m ²	18.60sq
Garage	36.38m ²	3.92sq
Portico	7.23m ²	0.78sq*
Total	216.38m ²	23.3sq*



aspire
Designer Homes



Minimum lot widths and depth may vary due to Council requirements and estate guidelines. Geographical zones apply. Sizes based on standard facade. Sizes may vary slightly subject to facades selected. Brochure is for illustration purposes and should be used as a guide only. Illustrations are not to scale. Garage dimensions are external measurements only. Refer to actual working drawings. Façade photos may contain upgrades.



Minimum lot widths and depth may vary due to Council requirements and estate guidelines. Geographical zones apply. Sizes based on standard facade. Sizes may vary slightly subject to facades selected. Brochure is for illustration purposes and should be used as a guide only. Illustrations are not to scale. Garage dimensions are external measurements only. Refer to actual working drawings. Façade photos may contain upgrades.